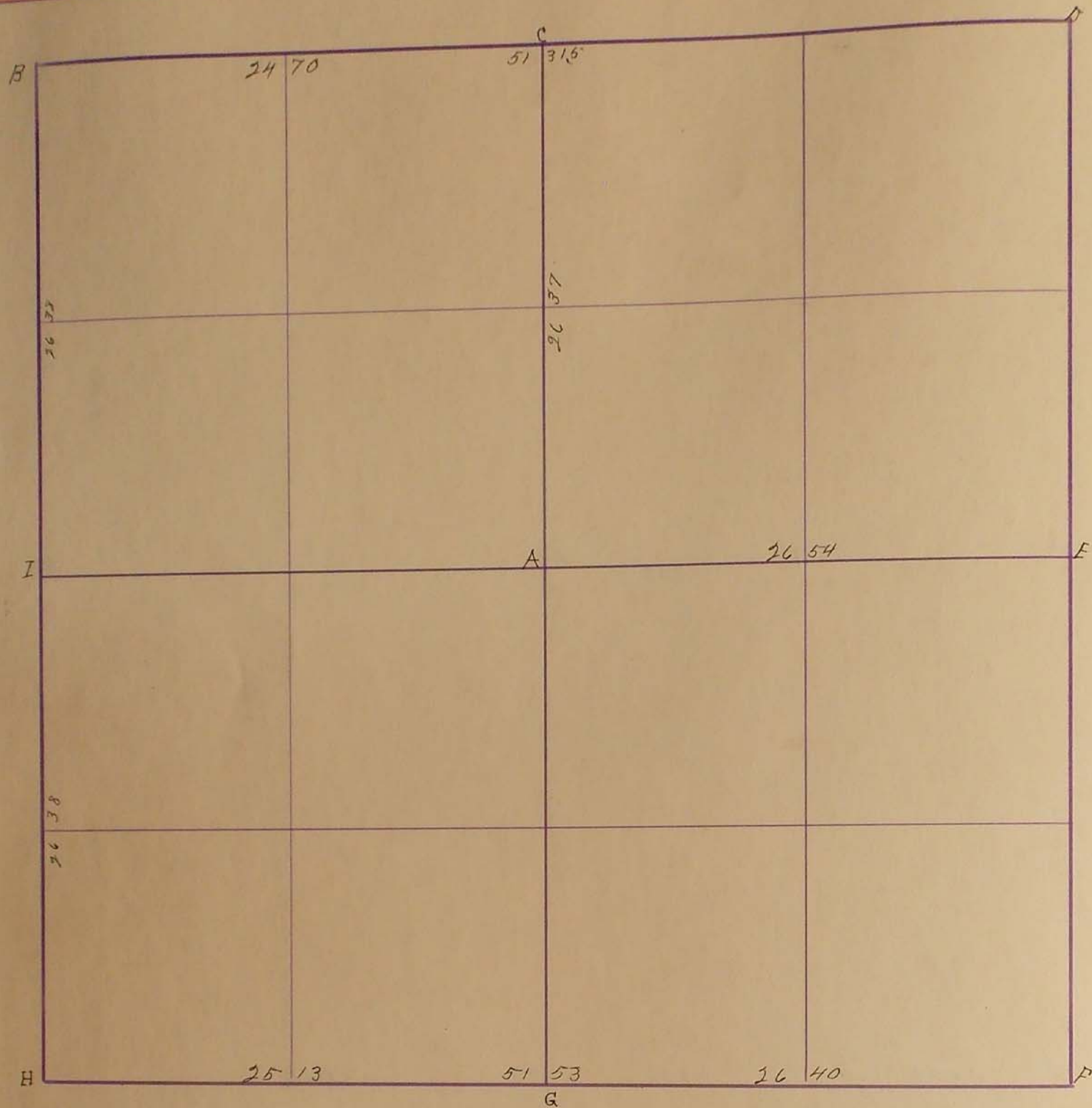


SURVEYOR'S RECORD

Section 18

Township 105

Range 42



Apr. 25 1901

- A. Stone 14 X 26 X 36
- B. .. 10 X 16 X 20
- C. .. 18 X 22 X 32
- D. Gov mound Pit and Stone
- E. Stone 18 X 22 X 40
- F. .. 17 X 17 X 37
- G.
- H. Stone 10 X 12 X 26 - 33' n. of culvert
- I. .. Large and small piles around

J. W. Hoolestone off

Sept. 20 1927

- H - 2 Stones on top of original stone F. cor 50.0 n.W.
F. cor 48.0 n.E - F. cor. 44.8 S.E F. cor. 45.8 S.W.
- I. Stone established old one cut out by Grade
F. cor. 37.8 S.E + 13.9 S. F. cor. 45.7 S.W. + 12 ft South
- B. Stone on top of old stone F. cor. 48.0 n.E - F. cor. 46.3 S.E.
F. cor. 46.5 S.W. F. cor. 47.5 N.W.
- D. Placed iron stake 1" by 4 feet long by Gov. stake in edge of
old cut

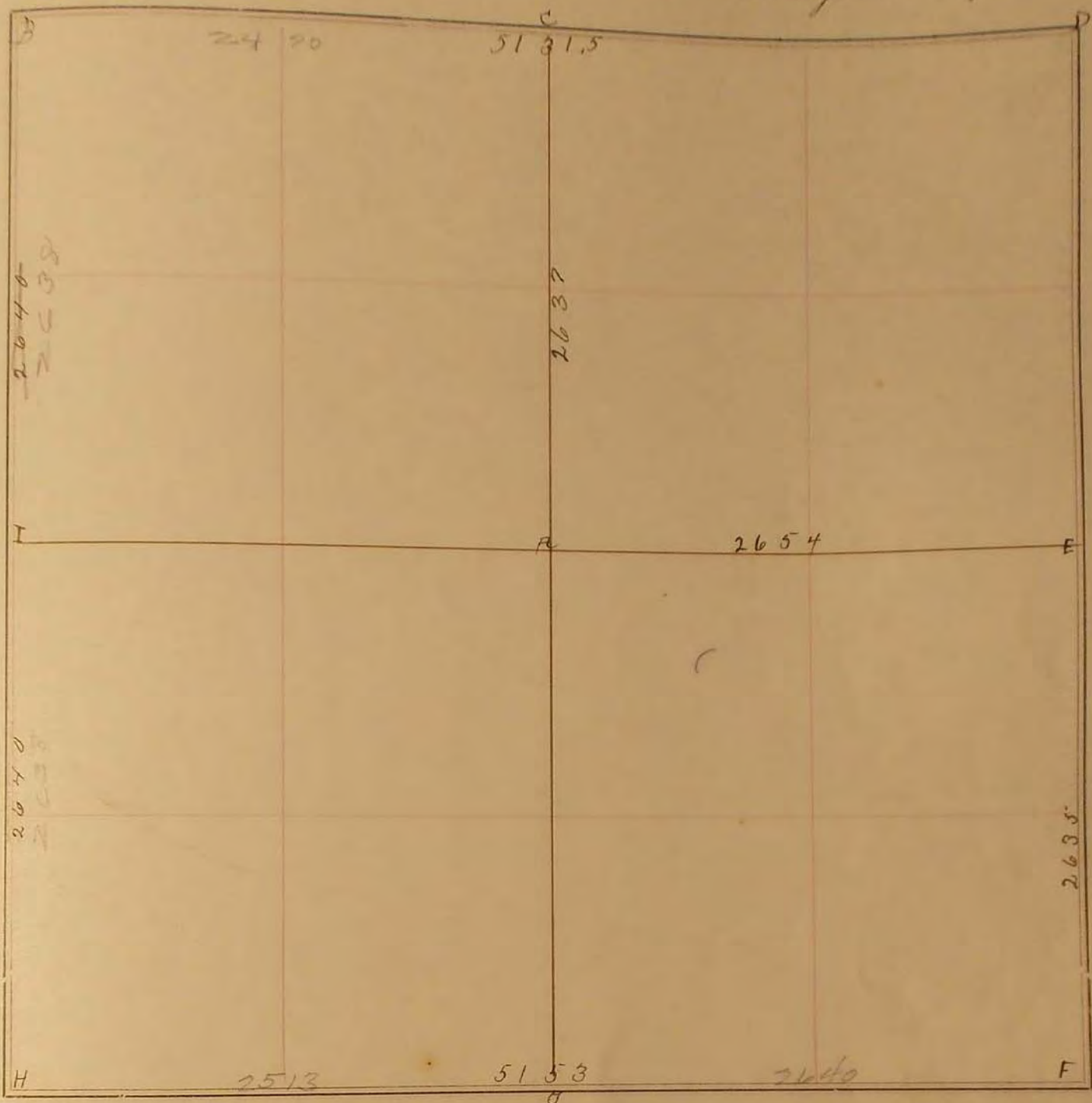
18
19

SURVEY No. _____

Section 18

Town 105

Range 42



FIELD NOTES.

Apr. 25, 1901.

- A Stone 14 X 26 X 36
- B " 10 X 16 X 20
- C " 12 X 22 X 32
- D Gov. mound, pits + stake
- E Stone 18 X 22 X 40
- F " 12 X 12 X 22
- G
- H Stone 10 X 12 X 26, 33' n. of culvert
- I " large small piled around

J. W. Woodstencroft

Sept. 20, 1927

- H. 2 stones on top of original stone. Ferr. 50.0 N.W., Ferr. 48.0 N.E., Ferr. 44.8 S.E., Ferr. 45.8 S.W.
- I. Stone established old and cut out by grade. Ferr. 32.8 S.E. + 13.9 South, Ferr. 46.7 S.W. + 12.2 South
- B. Stone on top of old stone Ferr. 46.0 N.W., Ferr. 46.3 S.E., Ferr. 46.5 S.W., Ferr. 47.5 S.W.
- D. Plank iron stake one inch by 4 feet long by four stake in edge of old cut